



**Drive  
Solutions for  
the Crane  
Industry  
Robust,  
Strong, Made  
to Last**



 **Bauer**<sup>®</sup>  
Gear Motor

An Altra Industrial Motion Company



## Drive technology requirements

The field of logistical solutions is faced with increasingly more demanding human and material requirements. In 2010, more than 420 million tons of goods were handled in Europe alone. This annually increasing figure poses, and will continue to pose, a challenge for logistical and transport systems.

Both the challenge and the means to solve it are clear:

*The flow of commodities should arrive with the end customer, the processing company and the plant construction firm in a quick, safe and reliable manner.*

This requires future-orientated solutions tailored to specific applications, particularly in the field of drive technology. Bauer Gear Motor can draw on decades of experience in this area. While motors specially developed for use with mains supply were previously used to compensate for slip and torque, the tasks of braking, positioning and acceleration have now been taken over by frequency inverters.

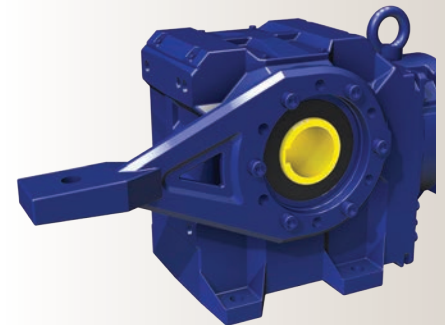
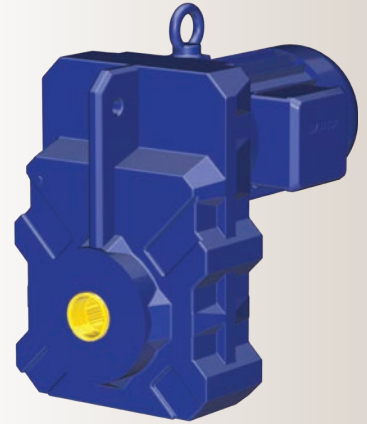
In order to achieve this, the drive technology needs to be optimally designed. An intermittent duty (e.g. S3-60%) adjusted to requirements and duty cycles is often used for crane and cross-travel trolleys. Due to their high starting breakdown torque, Bauer motors have large reserves that aid acceleration and lead to perfectly balanced process dynamics.

Motors with a power of over 0.75 kW are designed according to the IE energy efficiency classification as per EU Regulation 640/2009/EC in its latest version.





	Feature	Advantage	Benefit
Connections Output shaft	<ul style="list-style-type: none"> <li>Variety of shaft designs                             <ul style="list-style-type: none"> <li>Splined shafts (DIN 5480 compliant)</li> <li>Hollow shaft with shrink disc connection</li> <li>Hollow shaft with keyway</li> </ul> </li> </ul>	<ul style="list-style-type: none"> <li>Available for shaft-mounted and bevel gearboxes</li> </ul>	<ul style="list-style-type: none"> <li>Easy drive assembly/disassembly</li> <li>Non-destructive disassembly, even after long periods of operation</li> <li>Impervious to reversible movements</li> </ul>
Housing	<ul style="list-style-type: none"> <li>Robust housing design</li> </ul>	<ul style="list-style-type: none"> <li>Standard for all types of Bauer gears</li> </ul>	<ul style="list-style-type: none"> <li>Vibration and impact resistant</li> <li>Enhanced reliability</li> <li>Long service life and availability</li> </ul>
Motor	<ul style="list-style-type: none"> <li>Tailored motor dimensioning</li> </ul>	<ul style="list-style-type: none"> <li>Technical and economical solution</li> </ul>	<ul style="list-style-type: none"> <li>Dimensioning to fit your application (e.g. S3-60% intermittent duty)</li> <li>Compact design with high starting and breakdown torque</li> <li>High motor protection class IP65 (standard)</li> </ul>
Brakes	<ul style="list-style-type: none"> <li>Variety of brake options</li> </ul>	<ul style="list-style-type: none"> <li>Increased flexibility</li> </ul>	<ul style="list-style-type: none"> <li>Built-on brakes in IP65</li> <li>Finely graduated brake torques</li> <li>Microswitch for brakes</li> <li>Space heaters</li> </ul>
Options	<ul style="list-style-type: none"> <li>Expandable motor options</li> </ul>	<ul style="list-style-type: none"> <li>Increased flexibility</li> </ul>	<ul style="list-style-type: none"> <li>Incremental/absolute encoder systems</li> <li>Optional grey cast iron stators</li> <li>Space heaters</li> </ul>
Drive	<ul style="list-style-type: none"> <li>Efficient range of geared motors</li> </ul>	<ul style="list-style-type: none"> <li>Energy saving</li> </ul>	<ul style="list-style-type: none"> <li>Latest technologies</li> <li>Motors with increased energy efficiency as per IE classification</li> </ul>



**Couplings**

**Ameridrives Couplings**

*Mill Spindles, Ameriflex, Ameridisc*

Erie, PA - USA  
1-814-480-5000

*Gear Couplings*

San Marcos, TX - USA  
1-800-458-0887

**Bibby Turboxflex**

*Disc, Gear, Grid Couplings, Overload Clutches*

Dewsbury, England  
+44 (0) 1924 460801

Boksburg, South Africa  
+27 11 918 4270

**TB Wood's**

*Elastomeric Couplings*

Chambersburg, PA - USA  
1-888-829-6637 – Press #5

*For application assistance:  
1-888-829-6637 – Press #7*

*General Purpose  
Disc Couplings*

San Marcos, TX - USA  
1-888-449-9439

**Ameridrives Power Transmission**

*Universal Joints, Drive Shafts, Mill Gear Couplings*

Green Bay, WI - USA  
1-920-593-2444

**Huco Dynatork**

*Precision Couplings and Air Motors*

Hertford, England  
+44 (0) 1992 501900

Chambersburg, PA - USA  
1-800-829-6637

**Linear Products**

**Warner Linear**

*Linear Actuators*

Belvidere, IL - USA  
1-800-825-6544

*For application assistance:  
1-800-825-9050*

St Barthelemy d'Anjou, France  
+33 (0) 2 41 21 24 24

**Electromagnetic Clutches and Brakes**

**Warner Electric**

*Electromagnetic Clutches and Brakes*

New Hartford, CT - USA  
1-800-825-6544

*For application assistance:  
1-800-825-9050*

St Barthelemy d'Anjou, France  
+33 (0) 2 41 21 24 24

*Precision Electric Coils and Electromagnetic Clutches and Brakes*

Columbia City, IN - USA  
1-260-244-6183

**Matrix International**

*Electromagnetic Clutches and Brakes, Pressure Operated Clutches and Brakes*

Brechin, Scotland  
+44 (0) 1356 602000

New Hartford, CT - USA  
1-800-825-6544

**Inertia Dynamics**

*Spring Set Brakes; Power On and Wrap Spring Clutch/Brakes*

New Hartford, CT - USA  
1-800-800-6445

**Overrunning Clutches**

**Formsprag Clutch**

*Overrunning Clutches and Holdbacks*

Warren, MI - USA  
1-800-348-0881 – Press #1

*For application assistance:  
1-800-348-0881 – Press #2*

**Marland Clutch**

*Roller Ramp and Sprag Type Overrunning Clutches and Backstops*

South Beloit, IL - USA  
1-800-216-3515

**Stieber Clutch**

*Overrunning Clutches and Holdbacks*

Heidelberg, Germany  
+49 (0) 6221 30 47 0

**Heavy Duty Clutches and Brakes**

**Wichita Clutch**

*Pneumatic Clutches and Brakes*

Wichita Falls, TX - USA  
1-800-964-3262

Bedford, England  
+44 (0) 1234 350311

**Twiflex Limited**

*Caliper Brakes and Thrusters*

Twickenham, England  
+44 (0) 20 8894 1161

**Industrial Clutch**

*Pneumatic and Oil Immersed Clutches and Brakes*

Waukesha, WI - USA  
1-262-547-3357

**Gearing**

**Boston Gear**

*Enclosed and Open Gearing, Electrical and Mechanical P.T. Components*

Charlotte, NC - USA  
1-800-825-6544

*For application assistance:  
1-800-816-5608*

**Bauer Gear Motor**

*Geared Motors*

Esslingen, Germany  
+49 (711) 3518-0

**Nuttall Gear and Delroyd Worm Gear**

*Worm Gear and Helical Speed Reducers*

Niagara Falls, NY - USA  
1-716-298-4100

**Belted Drives and Sheaves**

**TB Wood's**

*Belted Drives*

Chambersburg, PA - USA  
1-888-829-6637 – Press #5

*For application assistance:  
1-888-829-6637 – Press #7*

**Engineered Bearing Assemblies**

**Kilian Manufacturing**

*Engineered Bearing Assemblies*

Syracuse, NY - USA  
1-315-432-0700

**Bauer Gear Motor**

**Bauer Gear Motor GmbH**

Eberhard-Bauer-Strasse 36-60  
73734 Esslingen - Germany

+49 711 3518 0  
+49 711 3518 381 (Fax)

www.bauergears.com

**Bauer Gear Motor s.r.o**

Tovarenská 49  
953 01 Zlate Moravce - Slovakia

+421 37 6926100  
+421 37 6926181 (Fax)

www.bauergears.com

**Bauer Gear Motor Limited**

Nat Lane Business Park  
Winsford, Cheshire  
CW7 3BS - United Kingdom

+44 1606 868600  
+44 1606 868603 (Fax)

www.bauergears.com

**Bauer Gear Motor Finland Oy Ab**

Yrittajankuja 3  
01800 Klaukkala - Finland

+358 207 189 700  
+358 207 189 701 (Fax)

www.bauergears.com

**Bauer Gear Motor LLC**

31 Schoolhouse Rd.  
Somerset NJ 08873-1212 - USA

+1 732 469 8770  
+1 732 469 8773 (Fax)

www.bauergears.com

**Altra Industrial Motion (Shenzhen) Co., Ltd.**

18# HuanZhen Road Dabo  
Industrial Zone - BoGoang Village  
ShaJing Town - BaoAn District  
Guangdong Province  
518 104 ShenZhen City / China

+86 755 27246308  
+86 755 27246017 (Fax)

www.bauergears.com

Bauer assumes no liability or responsibility for misprints and errors in catalogues, brochures and other printed documentation. Bauer reserves the right to make changes to products without prior notice, including to products that have already been ordered, unless contractual technical specifications are affected by such changes. All trademarks in these publications are the sole and exclusive property of the relevant companies. Bauer and the Bauer logo are trademarks of Bauer Gear Motor GmbH. All rights reserved.



An Altra Industrial Motion Company

www.bauergears.com

31 Schoolhouse Road  
Somerset, NJ 08873 - USA  
Tel: 732-469-8770  
Fax: 732-469-8773